

USER'S MANUAL





USER'S MANUAL V1.2



FCC Radio Frequency Interference Statement:

This equipment has been tested and found to comply with the limits for a Class B digital device, pursuant to Part 15 of the FCC Rules. These limits are designed to provide reasonable protection against harmful interference in a residential installation. This equipment generates, uses and can radiate radio frequency energy and, if not installed and used in accordance with the instructions, may cause harmful interference to radio communications. However, there is no guarantee that interference will not occur in a particular installation. If this equipment does cause harmful interference to radio or television reception, which can be determined by turning the equipment off and on, the user is encouraged to try to correct the interference by one or more of the following measures:

- Reorient or relocate the receiving antenna.*
- Increase the separation between the equipment and receiver.*
- Connect the equipment into an outlet on a circuit different from that to which the receiver is connected.*
- Consult the dealer or an experienced radio/TV technician for help.*

The changes or modifications not expressly approved by the party responsible for compliance could void the user's authority to operate the equipment.

Warning : *all information contained in this document are subject to change without notice.*





CONTENTS

1. INTRODUCTION	4
2. CHARACTERISTICS	4
3. INSTALLATION	5
3.1 CONNECT THE SERIAL CABLE	5
3.2 CONNECT THE POWER SUPPLY	5
3.3 USE OF THE CD-ROM	6
3.3.1 <i>Operating system</i>	6
3.3.2 <i>Autorun</i>	6
3.3.3 <i>CD-ROM contents</i>	6
4. PRINTER USE	7
4.1 THE LEDS	7
4.2 THE 3 PRINTING MODES	7
4.3 HOW TO PLACE A RIBBON	7
4.4 CARD INSERTION.....	9
4.5 REMOVE THE RIBBON	9
5. WARNINGS	10





1. INTRODUCTION

Contents of the package :

- A Quick Start sheet
- A printer
- A power supply with its power cord
- A CDROM
- A serial cable

2. CHARACTERISTICS

Resolution : 300 dpi

Printing technologies : Thermal transfert
Direct thermal
Direct thermal rewritable

Interface : serial RS232C

Card insertion : manual

Consumables : Plastic cards ABS, PVC, PET
Thermochromic, leuco dye erasable cards
Thickness : 0,3 mm up to 0,8 mm
1mil up to 3 mils'
Ribbon Size : ISO 7810
for thermal transfer printing (500 cards)

Power supply : INPUT : 100-240 V
50-60Hz
consommation : max. 70W

operating conditions : temperature : 15°C to 35°C
Humidity : 20 to 80% without condensation

Dimensions 185 x 132,5 x 160 mm (W x D x H)
(7.28" x 5.21" x 6.30")

Weight : 2,2 Kg (4.80 Lbs)

Approvals : CE, FCC class B





3. INSTALLATION

3.1 *Connect the serial cable*



Only use the serial cable supplied with the printer

- Connect the 8 way mini-DIN connector to the printer
- Connect the DB9 connector to your PC serial port COM1 or COM2

3.2 *Connect the power supply*

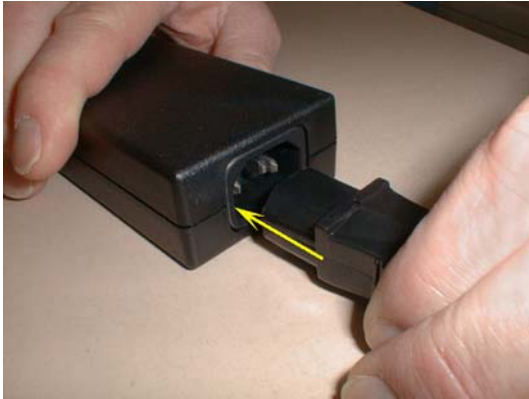
THE PRODUCT SAFETY IS WARRANTED ONLY WHEN USED WITH THE EXTERNAL POWER SUPPLY DELIVERED WITH THE PRINTER

The wall plug must be easily accessible and close to the printer. The product safety is only warranted with standart power connector (NFC15-100 or CEI364).



- Connect the JACK connector to the printer





- Connect the JACK connector to the printer
- Connect the power cord to the power supply
- Connect the other end of the power cord to the wall plug
- The printer is now ready

The printer power ON / OFF is done by plugging / unplugging the jack connector.

3.3 Use of the CD-ROM

Warning : the supplier assumes no responsibility for any damage, liability or other loss resulting from the use of these CD-ROM.

3.3.1 Operating system

- Windows 95/98/ME/2000
- Windows NT 4.0

3.3.2 Autorun

- Insert the CD-ROM into the CD-ROM drive and follow the instructions

or

- open the **index.htm** file which is on the CD-ROM then follow the instructions

3.3.3 CD-ROM contents



- The WINDOWS driver
- The user's manual
- The print head replacement method
- Tools software for boot, test and print head setup





4. PRINTER USE

4.1 *The leds*

LED	STATE	MEANING
GREEN 	OFF	Printer OFF
	ON	Printer ON
	BLINKING	Data loading
ORANGE 	OFF	Stand by mode
	ON	Waiting for a card insertion
	BLINKING	Error

When you switch on the printer, if the green led is OFF and the orange led is ON your printer is in the boot mode (contact your technical support).

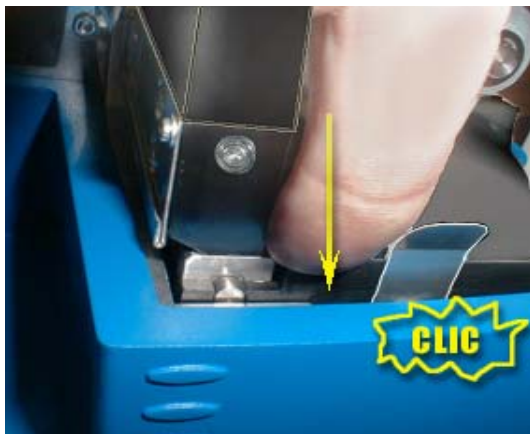
4.2 *The 3 printing modes*

With the Windows driver you can select 3 printing modes:

- Thermal transfert mode with thermal monochrom ribbon
- Direct thermal mode
- Direct thermal rewritable mode

4.3 *HOW TO PLACE A RIBBON*

- Open the printer
- Take the new ribbon

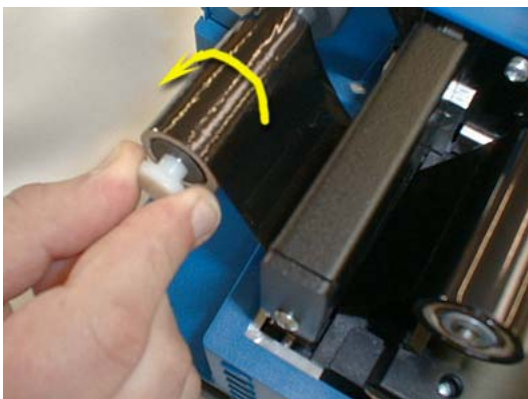


- Push down the card carrier with your finger until it is locked down

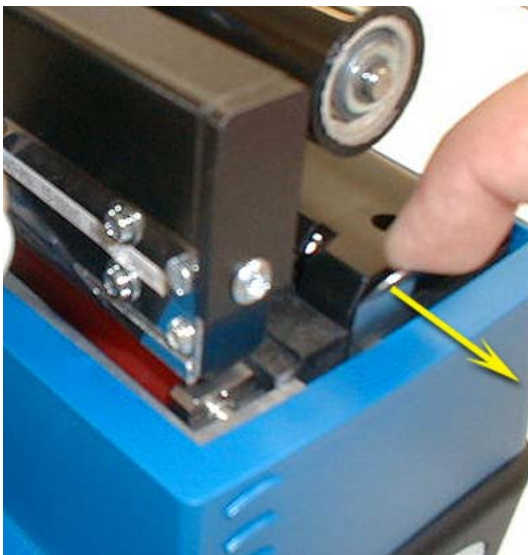




- Put the full reel on the right side
- Put the empty reel on the left side by sliding the ribbon under the printer



- Tighten the ribbon



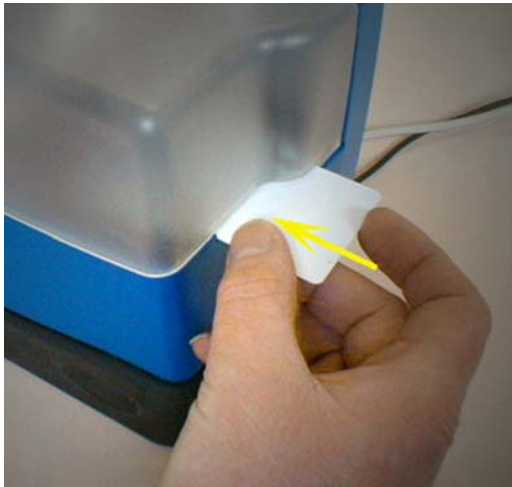
- maintain the card carrier with your finger and pull the string plate, until the card carrier gets in upper position

- close the printer
- the printer is now ready to print





4.4 Card insertion



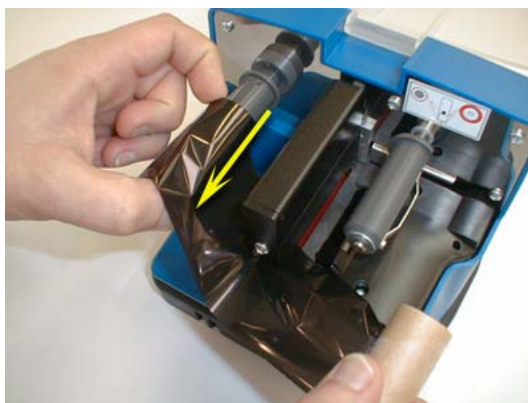
- When the orange led is on, the printer is waiting for a card insertion
- Insert the card
- Push until the roll takes it
- Wait until end printing
- If you insert a card and remove it, the printer will go to error state
- If you do not insert a card enough to be taken by the roll, after a timeout the printer will go to error state

4.5 Remove the ribbon

- Open the printer

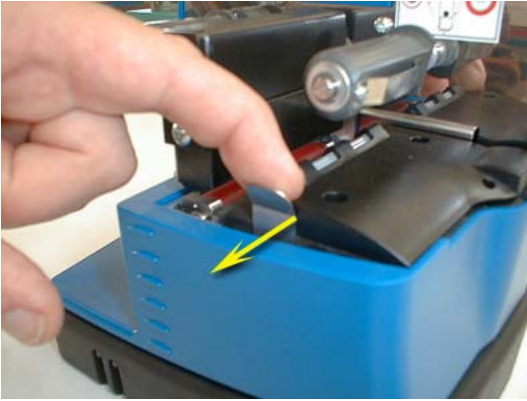


- Push down the card carrier with your finger until it is locked down



- Remove the empty reel
- Remove the full reel





- maintain the card carrier with your finger and pull the string plate, until the card carrier gets in upper position

- close the printer

5. WARNINGS

- Use only clean dry cards
- Cleaning the print header : see *Maintenance/tools* menu on the CDROM
- Cleaning the outside of the printer : do not use volatile solvents such as alcohol, paint thinner, gasoline, benzine, etc. Use only a clean dry cloth

