

C-680 LabelJet

User Manual



Output Solutions C-680 LabelJet Printer

1. Edition, January 2006
 2. Edition, August 2007
- Copyright 2006 **Godex Europe GmbH**

Notice

The information in this user manual is subject to change without prior notice!

Godex Europe does not offer any warranty:


- in terms of this information material/regarding these information materials
- to imply warranty concerning the marketability or the acceptability for this special purpose
- for failures or consequential damages in accordance to the provision or usage of these documents.
- for failures or consequential damages in accordance to the operation of the printer.

No part of this book may be photocopied, reproduced or translated in any other language without the written permission of **Godex Europe GmbH**.

Trademarks

Microsoft[®], MS-DOS and Windows are registered trademarks of Microsoft Corporation.

Adobe and Acrobat are registered trademarks of Adobe Systems Incorporated.

 is a registered trademark of Godex Europe GmbH.

I. Scope of delivery of	Output Solutions C-680 LabelJet Printer	
5		
<i>Printer</i>		5
<i>Accessories</i>		5
II. Terms and conventions		6
<i>Terms</i>		6
<i>Conventions</i>		6
<i>Symbols</i>		6
III. Connectivity		7
<i>Parallel port</i>		7
<i>USB-port</i>		7
<i>External Ethernet print server (optional)</i>		7
IV. Printer overview		8
<i>Power switch [1]</i>		9
<i>Paper tear off sensor [2]</i>		9
<i>Tear-off edge [3]</i>		9
<i>Button (no function) [4]</i>		9
<i>Resume button and –LED [5]</i>		9
<i>Print cartridge status symbol and –LED [6]</i>		9
<i>Print cancel button [7]</i>		10
<i>The indicator of the Gap / Black Mark sensor position [9]</i>		10
V. Installation		11
<i>Install driver</i>		11
<i>Connect printer without label roll unit</i>		11
<i>Calibrate print heads</i>		14
<i>Calibrate printer to label size</i>		17
<i>Install roll unit</i>		18
VI. Labelprinter Administration Tool		20
LABELPRINTER SETTINGS		20
<i>Pull-down Menu [1]</i>		20
<i>Which Label material do you use? [2]</i>		21
<i>Do TOF after each Label [3]</i>		21
<i>Cut/Tear Mode [4]</i>		21
<i>Tear/Cut Position Adjustment [5]</i>		22
<i>Save Settings and Load Profile [6]</i>		22

<i>Send Settings to printer [7]</i>	22
<i>Printer Control [8]</i>	22
<i>Default Data [9]</i>	22
LABELPRINTER CONTROL	23
<i>Calibration [1]</i>	23
<i>Cleaning [2]</i>	23
<i>Statistic/Diag [3]</i>	24
<i>Printer[4]</i>	24
<i>Printer Control [5]</i>	24
<i>Ink level Popup [6]</i>	25
VII. Quick Operating Guide	26
<i>Load labels</i>	26
<i>Print labels</i>	26
<i>Unload labels</i>	26
<i>Change label roll</i>	26
VIII. Troubleshooting	27
<i>Printer does not print</i>	27
<i>Check printer-LEDs</i>	27
<i>Despite pressing the power switch the printer remains switched off</i>	28
<i>Check printer cable connections</i>	28
<i>Printer still does not print</i>	28
<i>Poor print quality</i>	29
<i>Document is misprinted</i>	29
<i>Photos are not printed correctly</i>	30
<i>Printer is slow</i>	30
<i>Printer doesn't feed any paper</i>	31
<i>Printer passes labels through/ can not CALIBRATE GAP SENSOR</i>	31
<i>Resume light is flashing</i>	31
<i>After several print processes the printer start passing labels through without printing</i>	31
<i>Printer tries to CALIBRATE GAP SENSOR permanently</i>	31
<i>CALIBRATE GAP SENSOR does not detects gaps between labels</i>	31
<i>If you continue having problems</i>	31
IX. Disposal	32
X. Label specification	33
XI. Technical specification	34

I. Scope of delivery of Output Solutions C-680 LabelJet Printer

Your printer will be delivered in a carton with the following contents:

Printer

(Packed in a plastic bag and foam cushions)



Accessories

1. Power supply unit
(the appearance may differ from the picture shown, possibly a separate line cord is included)
2. Printer software CD
3. Roll unit and roll pick-up with steelplate
4. Tri-color print cartridge*
5. Black print cartridge *
6. User's manual



*not included in shipment for every country



In case the content of the package is not complete please contact your local dealer or **Godex Europe GmbH**.

II. Terms and conventions

The following terms and conventions are used in this user's manual.

Terms

The **Output Solutions C-680 LabelJet Printer** is also specified as **C-680** printer or simply as printer.

Conventions

- marks a listing
- marks instructions as shown on pictures
- ⇒ marks a result of an action

Capital letters mark commands, instructions, functions and key symbols.

Symbols

A Note icon indicates that additional information is provided

 **Note:**

The printer can also be used with only one printer cartridge.

The Caution icon indicates possible damages of the **Output Solutions C-680 LJ** –Printer or of an other device.

 **Caution!:**

Do not touch nozzles or copper contacts of the printer cartridge.

The Warning icon indicates possible harms to you or others:

 **Warning:**

Keep new and used print cartridges out of the reach of children.

III. Connectivity

There are several connection options:

- Parallel port
- USB-port
- External network port (optional)

Parallel port

It is recommended to use the IEEE-1284 parallel cable.
(for Windows 2000- or Windows XP-operating systems)



USB-port

It is recommended to use the USB 2.0 cable
(for Windows 2000- or Windows XP-operating systems).
The cable should not be longer than 3 meter.



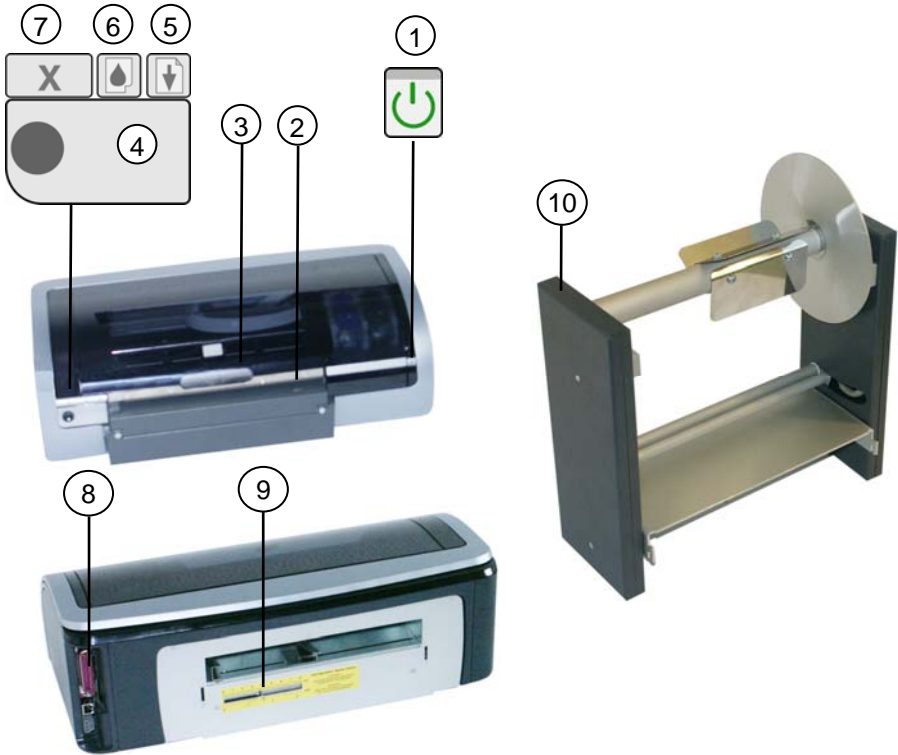
External Ethernet print server (optional)

The printer can also be connected with a Ethernet print server to a network.
Fast Ethernet print server should be connected to the parallel port of the
printer and to the LAN.



similar figure

IV. Printer overview



- | | |
|--|--|
| 1 Power switch | 6 Print cartridge status symbol and -LED |
| 2 Paper tear off sensor
(only available with
C-680 Standard) | 7 Print cancel button |
| 3 Paper tear off edge | 8 The parallel and the USB connector |
| 4 Button (no function) | 9 Gap / Black Mark Sensor position |
| 5 Resume button and -LED | 10 Label roll holder and label roll rod |

Power switch [1]

The printer can be switched on and off with the power switch. After pushing the button it will take a couple seconds until the printer is ready. The power-LED starts flashing when the computer processes data.

Caution!:

Always turn on/off the printer using the power switch. Using the switch of the connection plug board, surge protector or ta power outlet can cause damages to the printer and/or the ink cartridge will run dry.

Paper tear off sensor [2]

After the sensor detects that a label is printed, the printer will wait to print the next label until the label is removed. This function is only active if selected in the printer driver.

Tear-off edge [3]

Tear off the label by pulling it up against the tear-off edge.

Warning:

The tear-off edge could cause injuries.

Button (no function) [4]

On this printer this button has no function.

Resume button and –LED [5]

The Resume-LED flashes, if e.g. the paper tray is empty or a paper jam has to be cleared. When the problem is solved press the resume button to continue printing.

Print cartridge status symbol and –LED [6]

The print cartridge status-LED is on or flashes if the cartridge must be tested or replaced. In the driver tab TOOLBOX you can display the actual ink level of the cartridges.

Print cancel button [7]

Pressing the print cancel button cancels the current print job.

The indicator of the Gap / Black Mark sensor position [9]

Sensor lever for adjustment of the Gap/Black Mark-Position.

V. Installation

i Note:

Follow the instructions one by one:

- Install driver, connect printer
- Connect printer before fixing the label roll unit
- Calibrate print heads
- Adjust printer to label size
- Install label roll unit

Install driver

- Put the printer driver software CD in CD-ROM and follow the instructions.
 - Install driver software.
 - Connect printer before fixing the label roll holder (see following page).
 - The operating system identifies new hardware.
-


i Note:

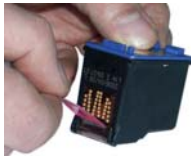
If you do not have administrator rights, the administrator has to install the driver software!

Connect printer without label roll unit

- Position the printer at its allocated space.
- Connect the printer to the mains supply by connecting the low voltage plug with the printer.



- Connect the power supply with a 230V power socket.
- Press power switch. 
- Check if printer is turned on.
- Open top cover.



- Unpack Tri-Color print cartridge and take off the protection tape.
- Lift the print cartridge latch.

 **Caution!:**

Do not touch nozzles or electric contacts!

- Insert new cartridge with contacts backwards and slide it into the print cartridge cradle.



- Push down the print cartridge latch until it locks in place.
- Insert the black print cartridge following the same procedure and close top cover.
- Connect the USB-cable to the USB-port of the printer and connect the printer to the computer, or



- Connect the parallel cable to the parallel port of the printer and connect the printer to the computer.

i Note:

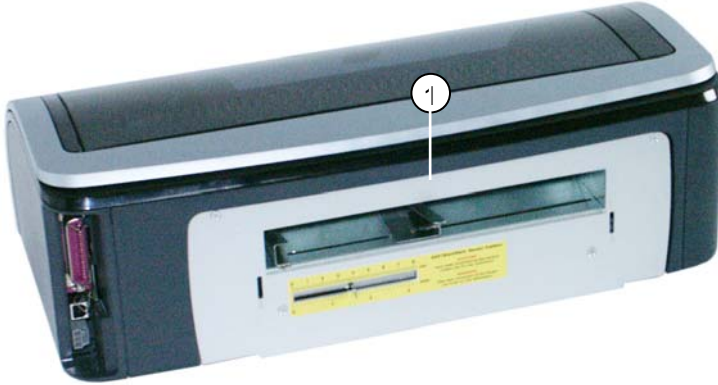
USB or Parallel cables are not part of the delivery!

i Note:

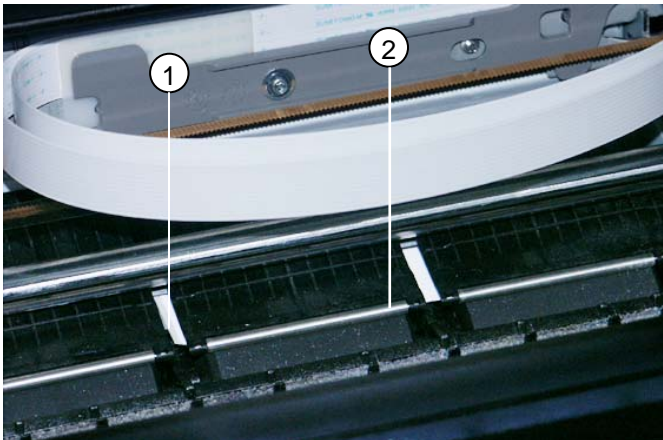
Calibrate the print head after each cartridge exchange. The calibration page will be printed on a plain DIN A4/letter sized sheet of paper!

Calibrate print heads

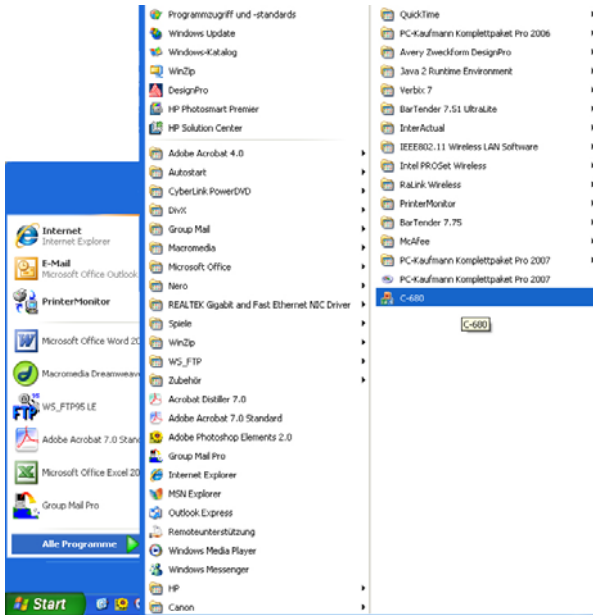
- Slide paper guides [1] firmly against the paper and slide the DIN A4/letter sized paper sheet forward until got stuck [2].



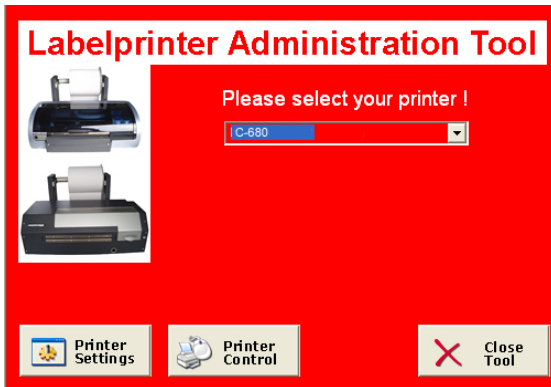
- Uplift the top cover and check if the paper is slid in properly [2].



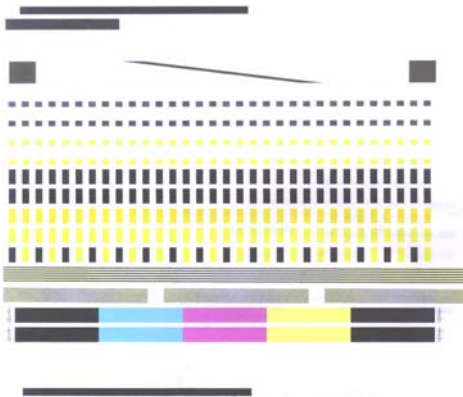
- Open START/PROGRAMS and open the program C-680 (XP screen).



The LABELPRINTER ADMINISTRATION TOOLBOX will be displayed.

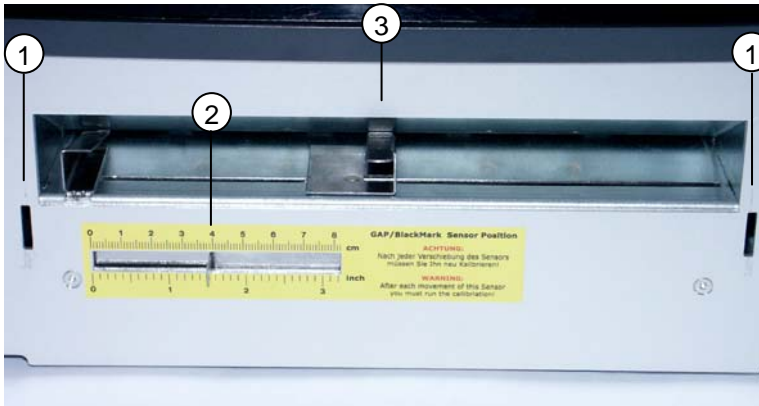


- Select the printer driver C-680 LabelJet.
- Click on button PRINTER CONTROL.
 - ⇒ The PRINTER CONTROL BOX opens.
- Click on button CALIBRATE PRINTHEADS
 - ⇒ A calibration test page will be printed.



Calibrate printer to label size

In the PRINTER CONTROL BOX click on button CALIBRATE SENSOR. The driver calibrates the sensor to the label and the label carrier. After that the GAP-/BLACKMARK sensor is able to detect the gap between labels.



- Measure the width of the label roll.
- Set the sensor flag GAP-/BLACK MARK [2] at a position, which will detect the gap between labels.

i Note:

If labels are round or oval you must place the sensor lever into a position where the gap between the labels is the most minimum. Depending on the label type you must activate Gap or BlackMark button in the LABELPRINTER SETTINGS BOX of the ADMINISTRATION TOOL!

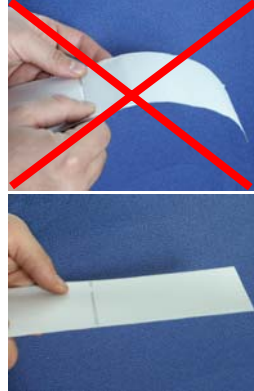
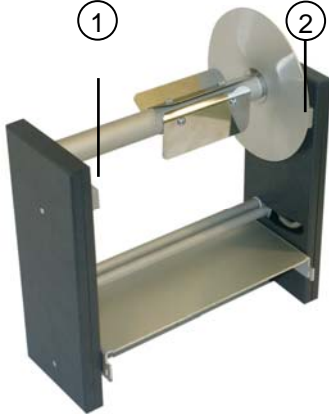
- On the right side set the paper guide[3] to the label width.

▲ Caution:

To avoid e.g. paper jam slide the paper guides firmly against the edges of the paper.

Install roll unit

- Insert roll rod [1] into the core of the label roll until it is at its place [2].



- Attach roll unit to the back of printer by sliding it into the slots positioned at both sides of the paper entry.
- Insert labels into the paper feed until it got stuck.

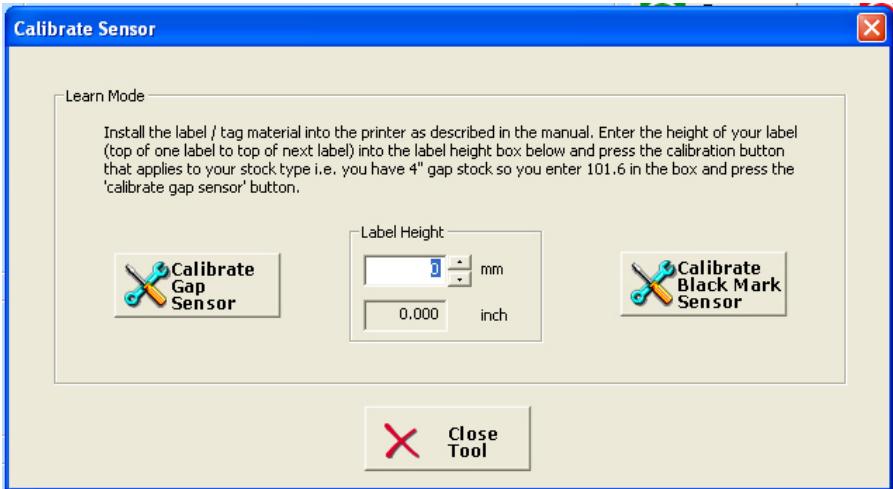
Caution!:

Be cautious that the label is not bended downwards to avoid paper jam.



- Put the roll rod with the label roll in the bearings of the label holder and tighten the label web by spinning the label roll gently backwards.

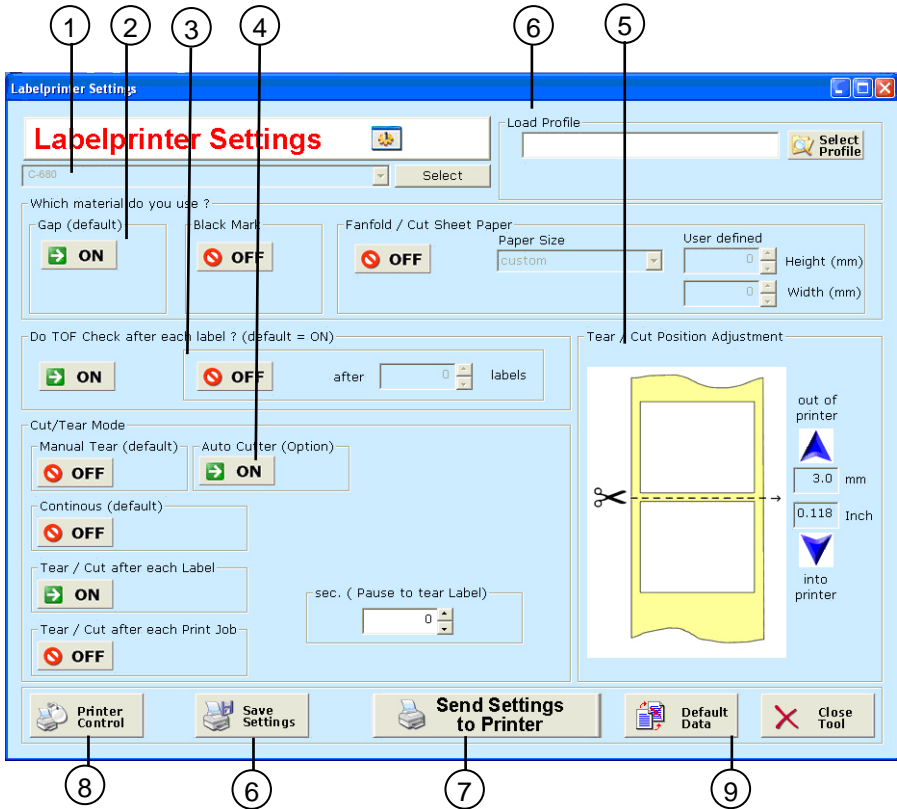
- Press the power and resume button at the same time or click on the button LOAD/UNLOAD in the PRINTER CONTROL BOX
 - ⇒ The label material will be loaded.
- Click on the CALIBRATE SENSOR button.
 - ⇒ The CALIBRATE SENSOR window opens.



- Enter the height of your label in the box (reg. label terms see chapter X. Label specification) and click on CALIBRATE GAP SENSOR or CALIBRATE BLACKMARK SENSOR.
 - ⇒ The printer will be calibrated.
- The printer is ready for use.

VI. Labelprinter Administration Tool

LABELPRINTER SETTINGS



Pull-down Menu [1]

Select the C-680 LabelJet printer driver. With the Labelprinter Administration Tool you can manage several C-680 printers. Confirm your selection by clicking on "SELECT" button.

Which Label material do you use? [2]

- Gap
Activate this button if you use die-cutted labels on a roll.
- Black Mark
Activate this button when the sensor should detect preprinted black bars on the label web.
- Fanfold/Cut Sheet Paper
Activate this button when you want to print on single paper sheets. You can either use the predefined paper sizes or define the appropriate size manually.

Do TOF after each Label [3]

The TOF checks the GAP after each printed label. If you deactivate this function the chance of misprints increases. You may choose TOF check after a certain amount of printed labels, e.g. 3.

i Note:

It is recommended not to deactivate the TOF check despite it is a bit slower! The printer checks the previous gap after each printed label. We do not recommend to deactivate the TOF check function!

Cut/Tear Mode [4]

- Manual Tear: default setting
Tear-off label by hand
- Automatic Cutter (optional): this option is only available with the C-680 with metal cabinet
The cutter cuts the labels after the printjob.
- Button: Continuous (default)
The printer stops after the last printed label of the printjob.
- Button: Tear/Cut after each label
The printer will stop after each printed label and waits till the printed label is torn off. Then the printer starts printing the next label.
-

- Tear/Cut after each print job
The printer will stop after each print job and is going to wait till the printed labels are torn off.
- Select the time after Tear off
This options defines the time the printer is going to wait before printing the next label

Tear/Cut Position Adjustment [5]

In case the tear edges are not centric between the labels you can adjust the position in both directions (forward/backward).
By clicking the arrow keys the label material will be moved in or out of the printer in 0.5 mm steps.

Save Settings and Load Profile [6]

This functions allows you to save different print profiles and/or to load previously saved profiles.

Send Settings to printer [7]

To activate all your settings you have to submit these to the printer.

Printer Control [8]

This button opens the Labelprinter Control Box.

Default Data [9]

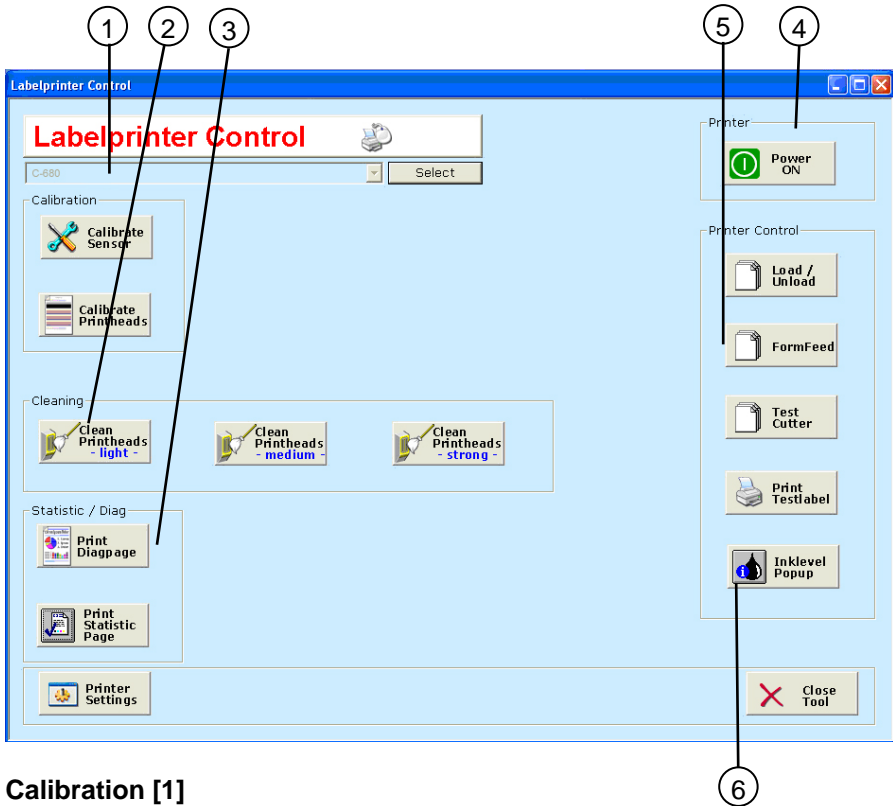
Activate this button for the default values!



Note:

After activation/deactivation of any option press “Send Settings to printer” to submit the settings to the printer!

LABELPRINTER CONTROL



Calibration [1]

- Button: Calibrate Sensor

After changing from GAP to BlackMark and vice versa you have to calibrate the printer. (see chapter V.Installation)

- Button: Calibrate Printheads

After changing the print cartridges it is recommended that you calibrate the print heads. This ensures that you always have excellent print quality. (see chapter V.Installation)

Cleaning [2]

- Button: Cleaning Printheads

Choose the intensity you want to clean the print heads with.

i **Note:**

Use “Cleaning Printheads **-strong-**” only if it is inevitable! Excessive use can cause damage to the print heads and wastes a lot of ink.

Statistic/Diag [3]

- Button: Print Diagpage

Print a diagnosis pattern to check if all nozzles work properly

Serial Number:



- Button: Print Statistic Page

Print a statistic page and get valuable information about your printer like serial number, total page count, firmware etc.

Serial Number:
Service ID: 17189

FW Revision: PD03007S - FLOWS Revision: UNOFFICIAL
Total Engine Page Count: 620
FB Page Count: 0/0
PCL Default Symbol Set: 341
Mfg 0-2: 0000000027E5 T val: 233

Error Code: 00000000

Printer[4]

Turn your printer ON with the toolbox

Printer Control [5]

- Button: Load/Unload
Load your labels with the toolbox or unload the labels when inserted
- Button: FormFeed

Feed one label.

- Button: Test Cutter

Test if the cutter is working. The cutter will cut one time. (works only with C-680 with metal housing and an installed cutter)

- Button: Print Test Label

Print a predefined label to check if the printer and the print head is working properly.

Ink level Popup [6]

Activate or deactivate the ink level popup which appears with every print job.

VII. Quick Operating Guide

Load labels

- Press the power and resume button at the same time or use the LOAD/UNLOAD function in the PRINTER CONTROL BOX.
 - ⇒ The labels will be transported to the first print line.

Print labels

- Find out the exact label size.
- Set label size in the respective program.
- Write your text or create your label.
- Select printer driver C-680 LabelJet Printer.
- Open properties.
- Set print quality, ink mixture for paper type and label size. It is recommended to set "set size in application" because you predefined the label size in your label software.
- Set the respective label parameter in the Labelprinter Settings (Administration Toolbox).
- Start the printing.

Unload labels

- Press the power and resume button at the same time or use the LOAD/UNLOAD function in the PRINTER CONTROL BOX.
 - ⇒ The labels will be ejected.

Change label roll

- Unload labels.
- Take roll pick-up out of the roll unit.
- Pull the roll pick-up out of the core of label roll and put it aside.
- If the core diameter of the new roll is the same as the old one insert roll pick-up until stop otherwise you have to adjust the roll pick-up to the core diameter of the new label roll. (An applicable roll pick-up optional available)
- Adjust printer to new label width.
- Insert paper into paper feed.
- Put roll pick-up with the new label roll in the retainer on the roll unit.
- Load labels.

VIII. Troubleshooting

Printer does not print

Check the following:

- The printer is connected to the power supply.
- All cables are connected properly.
- Printer is switched on.
- Print cartridges are installed correctly.
- Paper or other print media is inserted correctly in the tray.
- Top cover is closed.

Check printer-LEDs

The printer LEDs indicate status of the printer and possible problems.

- Power-LED flashes.
The printer initializes the print process.
LED stops flashing when printer has received all data.
- Resume-LED flashes
Paper tray may be empty.
Refill paper tray.
- Press the resume button on the front of the printer

i **Note:**

There may be a paper jam.

- Print cartridge status-LED is on or flashing
Check ink level.
The function DISPLAY THE INK LEVELS on register tab TOOLBOX checks which print cartridge low on ink is. Please change cartridge that are low on ink. If no print cartridge is low on ink press the resume button.
If the print cartridge status-LED is still flashing switch printer off and on again.

If print cartridge status-LED is on and flashing
Make sure you inserted the correct print cartridges.

Open the printer's top cover, take the black cartridge out and close top cover again.

If LED is off: a problem with this cartridge exists.

If LED continues flashing: open the top cover, reinsert black cartridge and take the color cartridge out.

Clean print cartridges (LABELPRINTER CONTROL BOX → CLEAN PRINT CARTRIDGES).

If print cartridge status-LED still continues flashing replace print cartridge.

- All LEDs are flashing
The printer may need a restart.
Press power button to switch printer off and then to switch it on again.
If LED is still flashing switch printer off.
Disconnect the printer's power cord out of the power outlet.
Plug power cord back in the power outlet.
Press power button to switch printer on.

Despite pressing the power switch the printer remains switched off

- The printer may have drawn too much power.
Disconnect the printer's power cord from the power outlet.
Wait approx. 10 seconds.
Reconnect power cord.
Switch printer on.
If you still can not switch the printer on try another power outlet or connect directly to the power outlet rather than into a surge protector.

Check printer cable connections

- Printer connection via USB
If the printer cable is connected to a USB hub printing conflicts may occur.
Attach USB cable directly to the computer. When printing do not use other USB devices that are connected to the hub.

Printer still does not print

- Paper jam
Clear paper jam.
Press resume button.

i Note:

If you print on labels make sure that no label has separated from the label carrier.

Poor print quality

- **Streaks and missing lines:**
If lines or dots on printed pages are missing or streaks appear the print cartridges may be low on ink or need to be cleaned.
- **Print is faded:**
Make sure that black print cartridge is installed.
If the black text and images on the print-outs are faded you may be print with the tri-color cartridge. In addition to the tri-color cartridge insert a black print cartridge to achieve an optimal print quality.
Make sure that no print cartridge is low on ink. If any print cartridge is low on ink you should replace it.
Make sure that the protection film has been peeled off the print cartridges.
Consider selecting a higher print quality.
- **Blank pages print:**
May be the pink protection film is still attached to the cartridge. Make sure that the protection film has been peeled off.
May be the print cartridges are low on ink. Replace empty cartridges.
- **Too much or little ink appears on the page:**
Adjust the ink volume: open the **PRINTER SETTINGS**.
Select the tab **BASICS**.
Click on button **ADVANCED FEATURES**.
Move the ink volume slider toward **LIGHT** or **HEAVY**.
Click **OK**.

Document is misprinted

- **Text and images are misaligned:**
If text and imaged are misaligned on your print-out the calibrate the printer.
- **Parts of the document are missing or not centered:**
Open dialog box **PRINTER PROPERTIES** and confirm the following options: tab **EFFECTS**
RESIZING OPTIONS: appropriate paper size
SCALE TO FIT: activate this option that text and graphics will be adjusted to the paper format.
tab **BASICS:** **ORIENTATION** verify the appropriate orientation.

- Print-out does not reflect new print settings:
You can adjust certain print settings, e.g. print sequence/order. The default print settings may differ from the software application's print settings
Select appropriate print settings in the application.

Photos are not printed correctly

- Check printer properties:
Open Tab PAPER/QUALITY and check the following
Size is: appropriate paper size
Ink mixture for paper type: appropriate ink mixture
Quality: best or maximum resolution
- Colors are tinted or incorrect:
Calibrate the ink cartridges.
Reprint the photo.
If colors are still tinted or incorrect clean print cartridge or change cartridges.
- If colors are still tinted or incorrect, then open the dialog box PRINTER PROPERTIES, select the tab COLOR, then COLOR ATTRIBUTES and then do the following:
If colors are too yellow move the slider towards cooler.
If colors are too blue move the slider towards warmer.
Reprint photo.
- If colors are still tinted or incorrect, calibrate the print cartridges.

Printer is slow

The printer's performance can be slowed down by a number of variables.

- Multiple software applications are opened
The printer does not have sufficient resources for the printer to print at its optimum speed.
Close all unnecessary applications to increase printer speed.
- Complex documents, graphics or photos are printing
Documents containing graphics or photos take longer to print than text documents.
- Best or maximum dpi mode is selected
If the best or maximum dpi mode is selected the printer prints slower.
Select a different print quality mode if you want to increase the printer speed.

- computer does not meet system requirements
If your computer does not have enough RAM or free space on the hard drive, the printer processing time will be longer.
Check if the computer's RAM, hard disk space and processor speed meet system requirements.
Free up space on the hard drive.
- Printer is in ink-backup mode
In ink-backup mode the printer may print more slowly
Use two print cartridges to increase print speed.

Printer doesn't feed any paper

- No label stock inserted.
- Labels are not slid in until stop.

Printer passes labels through/ can not CALIBRATE GAP SENSOR

- Wrong sensor settings on in LABELPRINTER SETTINGS BOX of the ADMINISTRATION TOOL.

Resume light is flashing

- Paper tray may be empty or there may be a paper jam.

After several print processes the printer start passing labels through without printing

- The manual sensor setting GAP/BLACKMARK has been changed.
calibrate to the label size again.

Printer tries to CALIBRATE GAP SENSOR permanently.

- Deactivate CALIBRATE GAP/BLACK MARK SENSOR.

CALIBRATE GAP SENSOR does not detects gaps between labels

- Move the GAP/BLACKMARK sensor slightly.

If you continue having problems

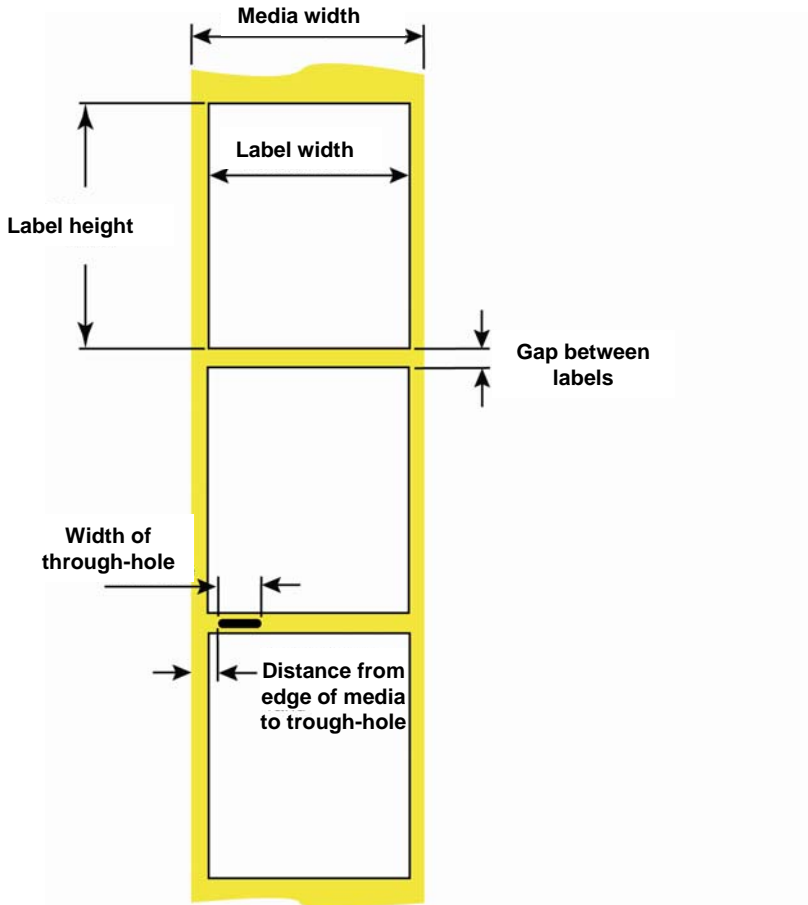
If you continue to have problems after investigating the troubleshooting topics, shut down, then restart your computer.

If you still have problems after restarting your computer please contact the hotline at **info@godex.eu** or contact the **Godex Europe** customer support +49 (0)2193-53396 0

IX. Disposal

Please return your C-680 LJ to Godex Europe GmbH

X. Label specification



	Max	Min
Label width	8" (203 mm)	1.5" (38 mm)
Media width	8.25" (210 mm)	1.5" (38 mm)
Label height	24" (610 mm)	0.75" (19 mm)
Gap between labels	10" (253 mm)	0.10" (2,5 mm)

XI. Technical specification

Print method	Drop-on-demand thermal inkjet printing
Print cartridges	416 ink nozzles on black print cartridge, ink jet impact frequency max. 18 kHz; 300 ink nozzles on tri-color print cartridge, ink jet impact frequency max. 21 kHz
Print speed	Up to 12 ppm
Print resolution	Black: up to 1200dpi Color: up to 4800 x 1200dpi (optimized) in color and 1200 Input-dpi
Comptabile operating systems	Microsoft Windows 2000 Professional, XP
Memory	8 MB built-in RAM
Printer languages (Emulationen)	HP PCL Level 3 Enhanced, ASCI
Font information	8 built-in fonts (4 each in portrait & landscape): CG Times, CG Times Italic; Univers, Univers Italic; Courier, Courier Italic; Letter Gothik, Letter Gothic Italic
Paper feed	Sensor controlled label/paper feed DIN A4 - manual
Media handling	Continous rolls, label rolls, single sheets endless rolls, label rolls, single sheets
Media size	Width: min. 55 mm - max. 230 mm Length: min. 70 mm - max. 600 mm
Electrical specifications	Input voltage: 100 to 240 V ($\pm 10\%$) Input frequency: 50 to 60Hz (± 3 Hz). external
Power consumption (maximum)	32 watts average when printing 4 watts when idle 2 watts when off
Connectivity	-IEEE 1284 Centronics/bi-directional - USB 2.0 - Plug & Play (Windows-Environment) - Ethernet 10/100/1000, TCP/IP (optional)
Dimensions	Printer: 447 (W) x250 (H) x 235 (D) mm – approx. 10 kg
Paper sensor	GAP-/BlackMark-Sensor 0 - 8,13 mm (0 - 3,2 Inch) adjustable -
Noise level	< 40 db(A)
Print cartridge capacity	black: 19ml, tri-color: 17 ml, photo: 17ml
Operating conditions	Temperature: ca. 5°C bis 40°C (41 to 104 degrees) Humidity: 15% to 80% relative humidity non-condensing
Roll diameter	max. label roll 22,86 cm (9 Inch)

Roll width	max. 21,59 cm (8,5 Inch)
Diameter of roll core	standard: 7,62 cm (3 Inch) optional: 2,54 bis 12,7 cm (1 bis 5 Inch)
Paperthickness	max. 1mm (optional bis 1,5 mm)
Roll media width	3,81 bis 21,59 cm (1,5 bis 8,5 Inch)
Label detection Label sensor	continous, GAP, BlackMark
Media size	min. 5,59 x 6,85 cm (2,2" x 2,7") max. 21,95 x 30,48 cm (8,5" x 12")

