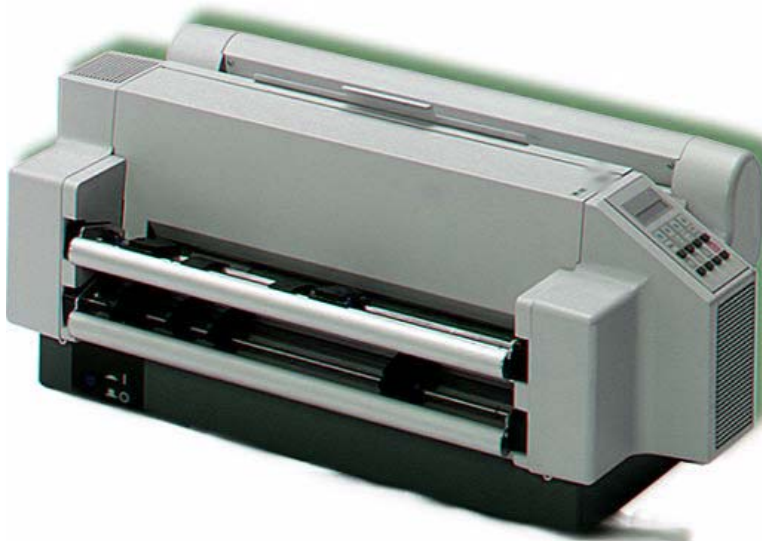


The Fast and Efficient Fanfold Printer

CI-4080



- Heavy Duty 24-pin dot matrix printer
- Performance:
 - 750 pages/hour
 - ~400 lines/minute
 - 30,000 pages/month
- Plug & Print:
Plug-in tractor cassette for easy paper loading
- Two fanfold papers alternatively accessible
- Output for fanfold paper and individual sheets
- Integrated cutting device:
 - separates print jobs
 - cuts fanfold paper and continuous multi-part formsets into any size
- 1 + 5 excellent copies
- 14 fonts including block characters, 13 barcodes
- Long life ribbon
30 million characters
- Connectivity to all major host systems and networks

The CI-4080 offers a professional solution for heavy duty, flexible and cost-effective printing. The CI-4080 is perfect for business and industrial users working in shared-resource environments because it carries a wide range of applications.

Godex Europe GmbH

Arnhäuschen 36

42929 Wermelskirchen, Germany

Tel.: +49 (0)2193 53396-0 eMail : info@godex.eu

Fax: +49 (0)2193 53396-69 Internet : <http://www.godex.eu>

HIGH SPEED FANFOLD PRINTER

TECHNICAL DATA CI-4080

| | |
|--|---|
| <p>Printer Specification</p> <p>Technology: serial impact dot matrix Printhead: 24 wires, 0.25 mm (0.01 inch) needle diameter; life time 400 million characters Print mode: data (DQ), near letter (NLQ) and letter quality (LQ) Print format: 136 characters at 10 characters per inch (cpi) Ribbon: nylon ribbon cassette, black, up to 16 million characters; XXL ribbon, black, 30 million characters Dimensions: 740 x 455 x 327 mm (WxDxH) (29.6 x 18.2 x 13 inch) Weight: 33 kg (72 lb) Diagnostics: selftest, hexdump, remote diagnostics via interface Operator Panel: 16 digit LCD display, trilingual (German, English, French) Rated voltage: 100-120/200-240 V, 50-60 Hz Power input: 200 W, (40 W Standby) Environmental temperature: operating: +10 to +35°C (+50 to +95°F) storage: -40 to 70°C (-40 to +158°F) 5 to 85% rel. humidity Noise level: 55 db(A) acc. to ISO 7779 Agency approvals: VDE/GS, UL, C-UL, CE, FCC-B</p> | <p>Connectivity</p> <p>STANDARD PERSONALITY MODULE (PM)</p> <p>Interfaces: parallel Contronics and serial RS-232C/V.24 or shared mode Emulations: IBM Proprinter XL24 (AGM), Epson LQ 2550/1060/, ESC/P2, Philips GP 310/490 Buffer: up to 30 Kbyte Character sets: ISO 7-bit, in 11 nat. versions incl. ASCII; ISO 8859/1; IBM Set1/Set2 in 14 nat. versions; IBM Code Pages 437,850,860,863,865; Epson Ext. Char. Set in 15 nat. versions, Eastern Europe character sets optional Fonts: draft quality; Data, Data Block and Data Large (block characters); near letter and letter quality: Courier, Letter Gothic (Italic), Micro, OCR-A, OCR-B, Orator, Oractor-C, Prestige, Roman and Script bold, italic, shadow, outline, (double) underline, overline, double strike, strike through, sub/superscript, double to octuple, for Data Large 99-fold size Attributes: 10, 12, 15, 17.1, 18 and 20 cpi, proportional Pitches: 2, 3, 4, 6, 8, ... 360 lpi Line spacing: EAN 8, EAN 13, UPC-A, UPC-E, Postnet, KIX Code Code 39, Code 93, Code 128 (incl. EAN 128), Codabar, 2 of 5 industrial, 2 of 5 interleaved, MSI Mod 10/10, all horizontal and vertical Graphics: uni/bidirectional printing (selectable), 360 x 360 dpi max. Macros: parameter settings for and/ or up to four individual printer</p> |
| <p>Paper Handling</p> <p>Paper paths: flatbed technology, 2 paper inputs and 2 paper outputs, selectable via software or operator panel Paper input: two independent, easy to plug-in tractor cassettes for fanfold paper; push tractors with park position Paper output: either to the rear (zero tear off or cut, batch tray) or to the top (stacker for cut sheets) Paper weight: 60 to 90 g/m² (2.4 to 3.6 oz/m²) formsets up to 350 g/m² (14oz/m²) Paper width: 4 to 16 inch Form feed speed: 20 inch/second; 25 ms per line feed Cutting device: integrated; rotation blade cuts bi-directionally, effective for 1 million cuts; separates print jobs and cuts fanfold paper and continuous multi-part formsets into any size Paper output: optimises automatically the distance between print head and paper according to paper thickness Automatic Gap Control (AGC): unattended mode Paper run control: unattended mode Copies: 1 + 5 copies, max. paper thickness 0.5 mm (0.02 inch)</p> | <p>OPTIONAL PERSONALITY MODULES</p> <p>Ethernet: Ethernet (10Base T, 10Base 2) and serial interfaces Twinax IPDS: IBM Twinax and parallel interfaces Twinax SCS: IBM Twinax, parallel and serial interfaces Coax SCS: IBM Coax, parallel and serial interfaces IGP: Standard PM with Printronix IGP 10/20/40 emulation DEC-ANSI: Standard or Ethernet PM with DEC-ANSI emulation Eastern European Version: PM Standard, Ethernet, IGP, Coax SCS, or Twinax SCS Printer drivers for Windows 3.x/95/98/NT are available.</p> |
| <p>Performance</p> <p>Print speed: (10 cpi) NLQ DQ: 700 cps DQ, 60 characters/line: 450 lpm NLQ: 350 cps DQ, 80 characters/line: 370 lpm LQ: 175 cps</p> <p>Throughput: letter spreadsheet (13.2") (ECMA 132, fanfold, 1-ply, 10 cpi) DQ: 750 430 pages/hour NLQ: 520 - pages/hour LQ: 320 - pages/hour</p> <p>Workload: MTBF: 30,000 pages per month 10,000 hours at 30% duty cycle</p> | <p>Optionen</p> <p>Printer stand: dimensions (WxDxH): 635 x 660 x 840 mm (25.4 x 26.4 x 33.6 inch) weight: ~ 25 kg (55 lb)</p> <p>Tractor cassettes: additional tractor cassettes can be loaded with paper to be ready for quick plug-in once required. Very helpful if several different types of media are used alternatively.</p> <p>Stacker option: stacking system integrated in the printer stand for orderly</p> <p>Cut sheet tray: optimised output tray for smaller sized forms. Mounted directly below the cutting device. Capacity: 600</p> |

Specifications are subject to change without notice. All registered trademarks are the property of their respective companies.

Godex Europe GmbH

Arnzhäuschen 36

42929 Wermelskirchen, Germany

Tel.: +49 (0)2193 53396-0 eMail: info@godex.eu

Fax: +49 (0)2193 53396-69 Internet: <http://www.godex.eu>

GODEX

1007-08